

Double Acting Pneumatic Actuator “DA” type

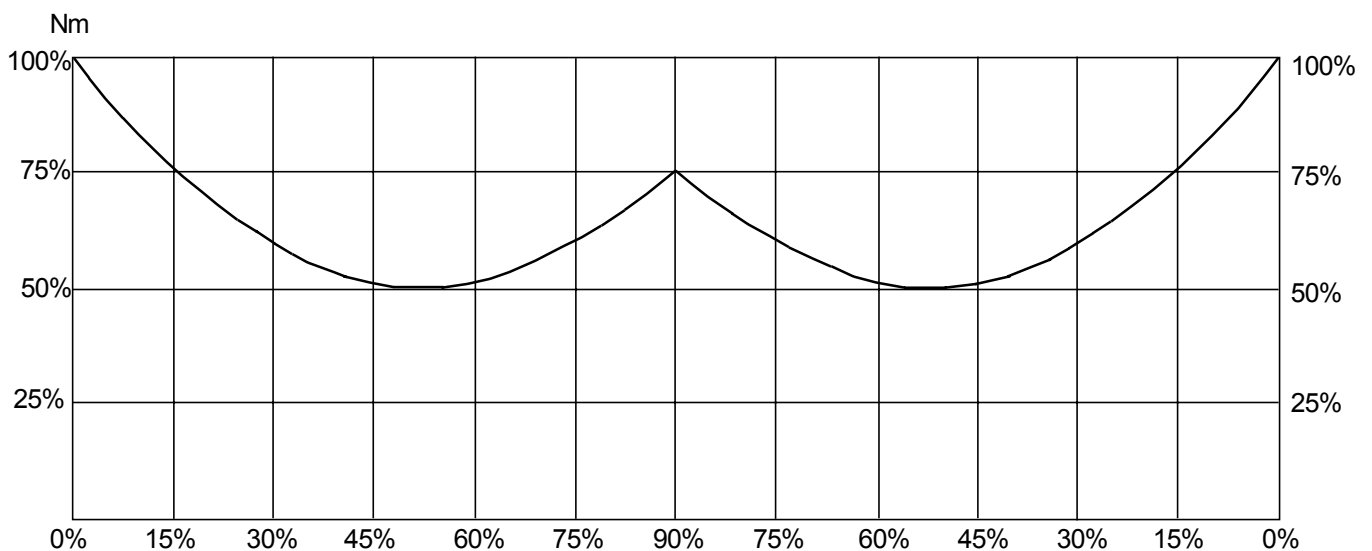


TECHNICAL FEATURES

- Torque from 8 Nm to 3840 Nm.
- Mounting flange according to DIN/ISO 5211 DIN 3337
- F03 - F04 - F05 - F07 - F10 - F12 - F14 - F16.
- NAMUR connection for accessories.
- Rotation angle 90°
- Torque: directly proportional to the air supply (see table).
- The code numbers after the DA letters, always correspond to the breakaway torque in Nm by 5.6 bar air supply.

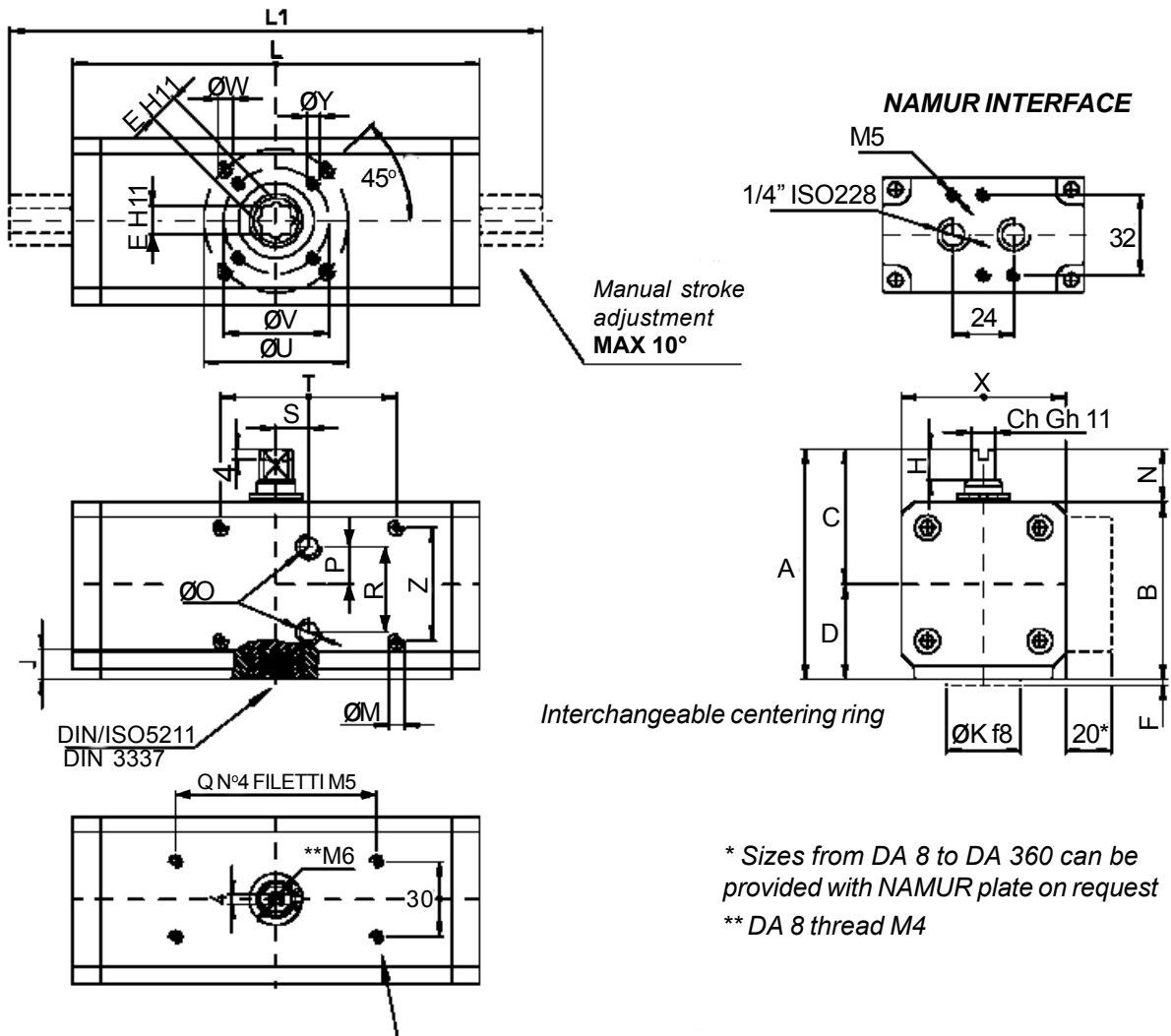
WORKING CONDITION

- Temperature: from 0°C to +80°C; from -20°C to +80°C with dry air only. (+150°C in special execution)
- Air supply: 5.6 bar; maximum 8.4 bar.
- Operating media: compressed filtered air, not necessarily lubricated.
- In case of lubricated air, either non detergent oil or NBR compatible oil, must be used.



OUTPUT TORQUE TABLE (Nm)				α° = ROTATION ANGLE				
SIZE	α°	3 bar	4 bar	5 bar	5,6 bar	6 bar	7 bar	8 bar
DA 8	0°	4.3	5.7	7.1	8.0	8.6	10.0	11.4
	45°	2.1	2.8	3.6	4.0	4.3	5.0	5.7
	90°	4.3	5.7	7.1	8.0	8.6	10.0	11.4
DA 15	0°	8.0	10.7	13.4	15.0	16.1	18.8	21.4
	50°	4.0	5.4	6.7	7.5	8.0	9.4	10.7
	90°	6.0	8.1	10.1	11.3	12.1	14.1	16.1
DA 30	0°	16.1	21.4	26.8	30.0	32.1	37.5	42.9
	50°	8.0	10.7	13.4	15.0	16.1	18.8	21.4
	90°	12.0	16.1	20.1	22.5	24.1	28.1	32.1
DA 45	0°	24.0	32.1	40.2	45.0	48.3	56.4	64.2
	50°	12.0	16.2	20.1	22.5	24.0	28.2	32.1
	90°	18.0	24.3	30.3	34.0	36.3	42.3	48.3
DA 60	0°	32.1	42.9	53.6	60.0	64.3	75.0	85.7
	50°	16.1	21.4	26.8	30.0	32.1	37.5	42.9
	90°	24.1	32.1	40.2	45.0	48.2	56.3	64.3
DA 90	0°	48.0	64.2	80.4	90.0	96.6	112.8	128.4
	50°	24.0	32.4	40.2	45.0	48.0	56.4	64.2
	90°	36.0	48.6	60.6	68.0	72.6	84.6	96.6
DA 120	0°	64.3	85.7	107.1	120.0	128.6	150.0	171.4
	50°	32.1	42.9	53.6	60.0	64.3	75.0	85.7
	90°	48.2	64.3	80.4	90.0	96.4	111.5	128.6
DA 180	0°	96.0	128.4	160.8	180.0	193.2	225.6	264.8
	50°	48.0	64.8	80.4	90.0	96.0	112.8	128.4
	90°	72.0	97.2	121.2	135.0	145.2	169.2	193.2
DA 240	0°	128.6	171.4	214.3	240.0	257.1	300.0	342.9
	50°	64.3	85.7	107.1	120.0	128.6	150.0	171.4
	90°	96.4	128.6	160.7	180.0	192.9	225.0	257.1
DA 360	0°	192.0	256.8	321.6	360.0	386.4	451.2	513.6
	50°	96.0	129.6	160.8	180.0	192.0	225.6	264.8
	90°	144.0	194.4	242.4	270.0	290.4	338.4	386.4
DA 480	0°	257.1	342.9	428.6	480.0	514.3	600.0	685.7
	50°	128.6	171.4	214.3	240.0	257.1	300.0	342.9
	90°	192.9	257.1	321.4	360.0	385.7	450.0	514.3
DA 720	0°	384.0	513.6	643.2	720.0	772.8	902.4	1027.2
	50°	192.0	259.2	321.6	360.0	384.0	451.2	529.6
	90°	288.0	388.8	484.8	540.0	580.8	676.8	772.8
DA 960	0°	514.3	685.7	857.1	960.0	1028.6	1200.0	1371.4
	50°	257.1	342.9	428.6	480.0	514.3	600.0	685.7
	90°	385.7	514.3	642.9	720.0	771.4	900.0	1028.6
DA 1440	0°	768.0	1027.2	1286.4	1440.0	1545.6	1804.8	2057.4
	50°	384.0	518.4	643.2	720.0	768.0	902.4	1059.2
	90°	576.0	777.6	969.9	1080.0	1161.6	1353.6	1545.6
DA 1920	0°	1028.6	1371.4	1714.3	1920.0	2057.1	2400.0	2742.9
	50°	514.3	685.8	857.1	960.0	1028.6	1200.0	1371.4
	90°	771.4	1028.6	1285.7	1440.0	1542.9	1800.0	2057.1
DA 3840	0°	2050	2840	3425	3840.0	4110	4800.0	5485
	50°	1025	1370	1710	1920.0	2055	2400.0	2740
	90°	1540	2055	2570	2880.0	3085	3600.0	4014

DA actuator DIN/ISO 5211 DIN 3337 sizes from DA 8 to DA 360



Manual stroke adjustment
MAX 10°

Interchangeable centering ring

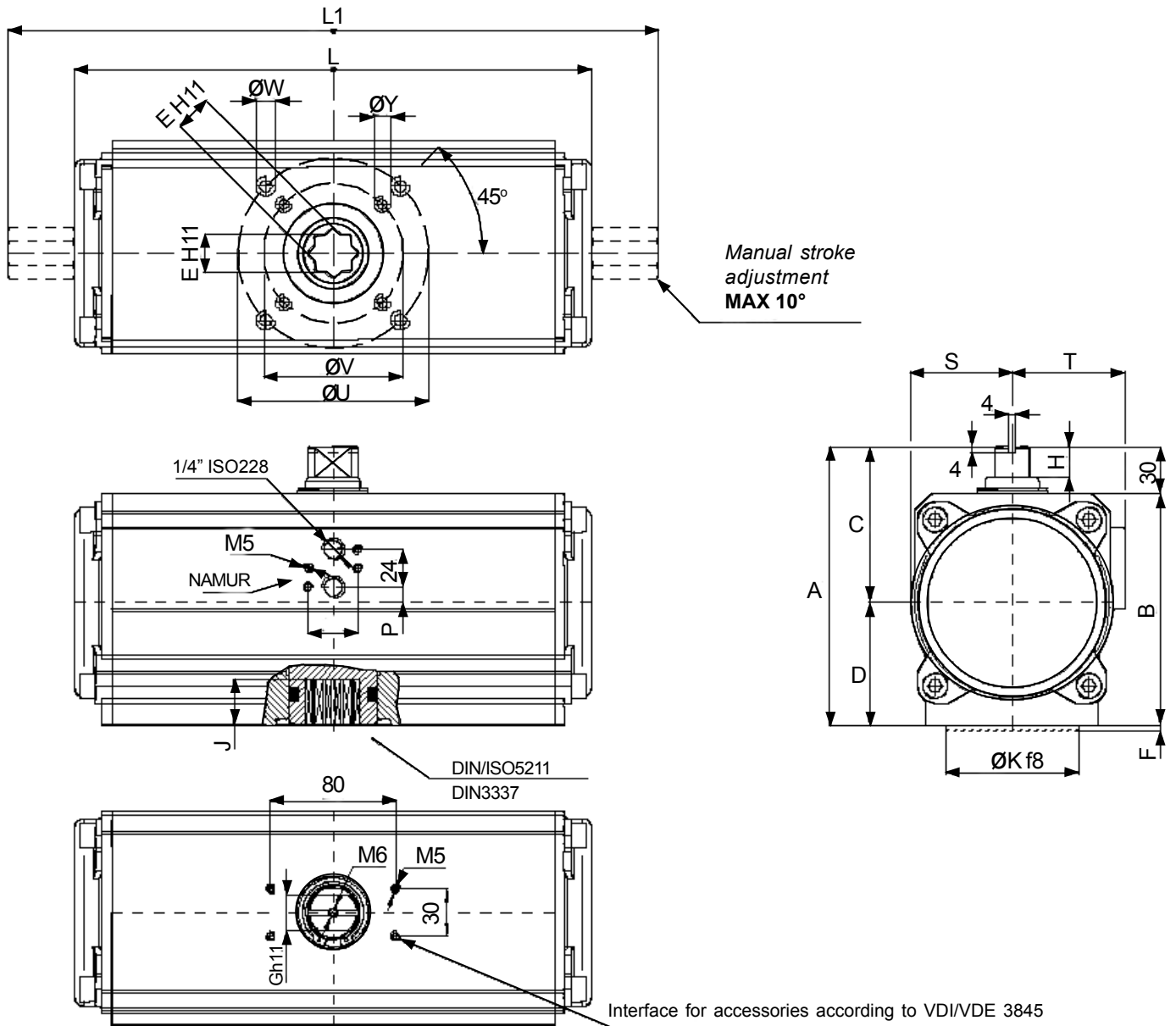
* Sizes from DA 8 to DA 360 can be provided with NAMUR plate on request
** DA 8 thread M4

Interface for accessories according to VDI/DE 3845

TABELLA DIMENSIONALE DIMENSION TABLE

code	DA008401S	DA015401S	DA030401S	DA045401S	DA045402S	DA060401S	DA060402S	DA090401S	DA120401S	DA180401S	DA240401S	DA360401S
code adj. 10°	DA008411S	DA015411S	DA030411S	DA045411S	DA045412S	DA060411S	DA060412S	DA090411S	DA120411S	DA180411S	DA240401S	DA360411S
size	DA 8 F03	DA 15 F03	DA 30 F03-F05	DA 45 F04	DA 45 F03-F05	DA 60 F04	DA 60 F03-F05	DA 90 F05-F07	DA 120 F05-F07	DA 180 F05-F07	DA 240 F05-F07	DA 360 F07-F10
L	m	70	115	130	144	152	152	169	184	212	242	264
L1	mm.	—	160	177	190	198	198	235	250	279	328	350
A	mm.	57.7	72.4	80.4	85.7	90.4	90.4	97.5	116.4	126	136.4	148
B	mm.	42.7	52	60	65.7	70	70	77.5	86	96	106	118
C	mm.	35	44.2	47.5	50	52.5	52.5	56.5	70	75	80	86
X	mm.	43.2	48	55	60	65	65	72	80	90	100	112
D	mm.	22.7	28.2	32.7	35.7	37.7	37.7	41.5	46.4	51	56.4	62
J	mm.	9.5	10.2	10.2	13.2	12.2	12.2	16.3	16.3	19.3	19.3	24.3
H	mm.	8	10	10	13	13	13	13	13	16	17	19
E	mm.	9	9	9	11	11	11	14	14	17	17	22
G	mm.	8	8	9	10	10	10	12	12	15	15	19
N	mm.	15	20	20	20	20	20	20	30	30	30	30
ØM x depth mm.	M 5x5	M 5x10	M 5x6	M 5x6	M 5x6	M 5x6	M 5x6	M 5x6	M 5x6	M 5x6	M 5x6	M 5x6
ØO thread GAS	1/8"	1/8"	1/8"	1/8"	1/8"	1/8"	1/8"	1/8"	1/8"	1/8"	1/8"	1/8"
P	mm.	11.5	9	12	12.5	17.9	17.9	17.9	21	21	21	25
Q	mm.	30	80	80	80	80	80	80	80	80	80	80
R	mm.	23	20.5	25	25	20.5	20.5	20.5	25	25	25	25
S	mm.	5	6	0	0	0	0	0	0	0	0	0
T	mm.	25	70	70	70	70	70	70	70	70	70	70
ØJ	mm.	—	—	50	50	—	50	70	70	70	70	102
ØV	mm.	36	36	36	36	42	36	50	50	50	50	70
F	mm.	2	2	2	2	2	2	3	3	3	3	3
ØK	mm.	25	25	25-35	25-35	30	25-35	35-55	35-55	35-55	35-55	55-70
ØY x depth mm.	M 5x8	M 5x9	M 5x9	M 5x9	M 5x9	M 5x9	M 5x9	M 6x11	M 6x11	M 6x11	M 6x11	M 8x15
ØW x depth mm.	—	—	M 6x11	—	M 6x11	—	M 6x11	—	M 8x15	M 8x15	M 8x15	M 10x17
Z	mm.	30	30	36	36	36	36	36	36	36	36	36
air dm³/cycle	0.034	0.079	0.148	0.219	0.219	0.28	0.28	0.43	0.59	0.87	1.18	1.74
weight Kg.	0.29	0.73	1	1.25	1.25	1.56	1.56	1.85	2.8	3.4	5.3	7.2

DA actuator DIN/ISO 5211 DIN 3337 sizes from DA 480 to DA 1920



DIMENSION TABLE

code	DA480401S	DA720401S	DA960401S	D1440401S	D1920401S
code adj. 10°	DA480411S	DA720411S	DA960411S	D1440411S	D1920411S
size	DA 480 F07-F10	DA 720 F10-F12	DA 960 F12	DA 1440 F14	DA 1920 F14
L	mm. 295	329.5	384	435	468
L1	mm. 379	415.5	466	555	581
A	mm. 160	178	186.2	216	231
B	mm. 130	148	153	186	198
T	mm. 67	72	76	86.5	92
S	mm. 57.7	64.5	69	79	88
C	mm. 92	99.5	100.3	114.5	121
J	mm. 24.3	29.5	29.5	38.5	38.5
H	mm. 19	19.5	19.5	19.5	24.5
E	mm. 68	78.5	86.2	101.5	110
D	mm. 68	78.5	86.2	101.5	110
G	mm. 19	22	24	27	32
P	mm. 2	10	14	19	20
ØU	mm. 102	125	—	—	—
ØV	mm. 70	102	125	140	140
F	mm. 3	3	3	3	3
ØK	mm. 55-70	70-85	85	100	100
ØY x depth	mm. M 8x15	M 10x17	M 12x21	M 16x25	M 16x25
ØW x depth	mm. M 10x17	M 12x21	—	—	—
air dm ³ /cycle	2.38	3.51	4.67	7.56	10.01
weight Kg.	8.4	12	14	19.7	25.4